

ResQLink - The Emergency Response System

J.Bharath Kumar¹, Atla Laxmi Adikhya Reddy², Avula Anusha³, Kamatam Nithin Kumar Goud⁴

¹Assistant Professor, ^{2,3,4}UG Student, ^{1,2,3,4} Department of Artificial Intelligence and Machine Learning.

^{1,2,3,4}J.B. Institute of Engineering & Technology,(UGC-Autonomous),Yenkapally,Hyderabad,
500075,Telangana.

*Corresponding author:Kamatam Nithin Kumar Goud(kamatamnithin214@gmail.com)

Abstract—In critical emergency situations, delays in communication and response can lead to severe consequences, including loss of life. Traditional emergency systems often rely on manual reporting, which can be slow, inefficient, and dependent on human intervention. This paper presents ResQLink, a smart emergency response system designed to enable rapid incident reporting, real-time location tracking, and efficient coordination between users and emergency services.

The proposed system integrates a mobile/web interface with a backend infrastructure that processes emergency requests instantly and routes them to the nearest available responders. It utilizes GPS-based location tracking, cloud-based data storage, and real-time communication mechanisms to ensure quick and reliable assistance. The system is designed with a user-centric approach, allowing individuals to send alerts with minimal interaction during stressful situations.

Experimental evaluation and system testing demonstrate that ResQLink significantly reduces response time and improves communication efficiency compared to traditional emergency reporting methods. The system provides a scalable and practical solution for enhancing public safety and emergency management.

Keywords: Emergency response system, real-time tracking, GPS, public safety, rapid communication, incident management, web application.

I. INTRODUCTION

Emergency situations such as accidents, medical crises, natural disasters, and security threats require immediate attention and rapid coordination. However, existing emergency response mechanisms often suffer from delays due to manual processes, lack of real-time data, and inefficient communication channels. [1].

In many cases, individuals in distress are unable to provide accurate location details or communicate effectively with emergency services. This gap leads to delayed responses, which can critically impact outcomes. With the increasing availability of smartphones and internet connectivity, there is a strong need for a system that can automate and streamline emergency reporting and response.

ResQLink is designed to address these challenges by providing a digital platform that enables users to send emergency alerts instantly along with their precise location[2]. The system ensures that alerts are processed in real time and forwarded to the appropriate responders without delay[3].

Unlike traditional systems, ResQLink focuses on simplicity, speed, and reliability. It minimizes user effort during emergencies by allowing one-click alert generation and automatic data transmission. Additionally, the system provides continuous tracking and status updates, improving transparency and coordination.

This work aims to build a scalable and efficient emergency response framework that enhances safety and reduces response time through the integration of modern web technologies and real-time communication.

This paper introduces a system that effectively addresses the challenges associated with delayed and inefficient emergency response mechanisms. The proposed framework, ResQLink, enables real-time emergency reporting by integrating location tracking, instant alert transmission, and efficient communication between users and responders. The system combines automated data processing with practical decision-support features to ensure quick and reliable assistance. [4], [15].

It generates a structured emergency alert along with relevant contextual information such as location and type of incident, allowing responders to act promptly. Additionally, the system provides clear status updates and improves transparency in the response process, enabling better coordination and informed decision-making during critical situations.

II. LITERATURE SURVEY

The development of efficient emergency response systems has been an important area of research, particularly with the rapid advancement of mobile technologies and real-time communication systems. Various approaches have been proposed to improve response time, accuracy, and coordination during critical situations. Various approaches have been proposed to improve response time, accuracy, and coordination during critical situations.

Early emergency response systems primarily relied on manual reporting methods such as phone calls to emergency numbers[1]. While these systems are widely used, they often suffer from delays due to communication barriers, inaccurate location information, and lack of proper coordination between responders. Studies have highlighted that response time is a crucial factor in determining the outcome of emergency situations, especially in medical and accident-related cases[2].

Early emergency response systems primarily relied on manual reporting methods such as phone calls to emergency numbers[1]. While these systems are widely used, they often suffer from delays due to communication barriers, inaccurate location information, and lack of proper coordination between responders. Studies have highlighted that response time is a crucial factor in determining the outcome of emergency situations, especially in medical and accident-related cases[2].

With the growth of mobile devices, several researchers have explored smartphone-based emergency alert systems. These systems utilize GPS technology to automatically detect and transmit the user's location to emergency services[3]. Such approaches significantly reduce dependency on verbal communication and improve the accuracy of incident reporting. However, many existing solutions are limited by lack of integration with real-time tracking and centralized coordination mechanisms[22].

Recent advancements have focused on integrating web-based platforms with mobile applications to create more scalable and accessible emergency systems[4]. Cloud-based architectures have been widely adopted to handle large volumes of emergency data and ensure reliability. These systems enable faster data processing, storage, and retrieval, making them suitable for real-time applications[5].

In addition to location tracking, some studies have incorporated features such as automatic alert triggering, user authentication, and multi-channel communication[6]. These enhancements aim to reduce user effort during emergencies and ensure that alerts reach the appropriate authorities without delay. However, many of these systems still lack a unified framework that combines all essential functionalities in a seamless manner[7].

Real-time communication technologies, including APIs and notification services, have further improved the efficiency of emergency response systems[8]. They enable instant transmission of alerts and status updates, enhancing coordination between users and responders. Despite these advancements, challenges such as system scalability, reliability, and ease of use remain areas of ongoing research[9][10].

The ResQLink system builds upon these existing approaches by providing a comprehensive solution that integrates real-time location tracking, instant alert generation, and efficient communication within a single platform[11]. Unlike traditional systems, it focuses on minimizing response time while ensuring simplicity and usability for individuals in distress. This makes it a practical and effective tool for modern emergency management[12]. Recent studies have explored the use of Internet of Things (IoT) devices in emergency response systems. Wearable sensors and smart devices can continuously monitor vital parameters such as heart rate, body temperature, and movement patterns[13]. In case of abnormalities, these devices can automatically trigger emergency alerts without user intervention. This approach is particularly useful in medical emergencies where the user may be unconscious or unable to respond[14][15].

Another important direction in research involves the use of Artificial Intelligence (AI) for predicting and prioritizing emergency situations. AI-based models can analyze historical data and identify patterns to classify the severity of incidents[16]. Such systems can help emergency services allocate resources more effectively by prioritizing critical cases over less urgent ones. However, implementing AI models requires large datasets and computational resources, which may not always be feasible in lightweight systems[17].

Geographical Information Systems (GIS) have also been widely used to enhance emergency response efficiency. GIS-based solutions enable visualization of incident locations on maps and assist in identifying the nearest emergency services[18]. By integrating mapping technologies, responders can choose optimal routes, reducing travel time and improving overall response efficiency[19]. Many modern systems rely heavily on GIS for real-time navigation and location analysis.

Several research works have focused on crowd-sourced emergency reporting systems, where users in a particular area can report incidents collaboratively[20]. These systems improve situational awareness and provide multiple perspectives on the same event. While crowd-sourcing increases data availability, it also introduces challenges such as misinformation and data validation, which need to be carefully managed[21]. Cloud computing has played a significant role in the evolution of emergency response systems. Cloud platforms provide scalable infrastructure for storing large volumes of data and handling multiple simultaneous requests. They also support real-time synchronization between users and responders. The use of cloud services ensures high availability and reliability, making them suitable for mission-critical applications like emergency management[22][23].

Despite significant advancements in this domain, many existing systems are either too complex for everyday users or lack integration between different components such as location tracking, alert generation, and responder coordination[24]. The ResQLink system addresses these limitations by offering a unified and user-friendly platform that combines essential features into a single solution, ensuring faster response and improved usability during emergencies[25].

III. METHODOLOGY

The ResQLink system follows a structured workflow designed to handle emergency requests efficiently. The overall process includes user input, data processing, location tracking, alert transmission, and response coordination.

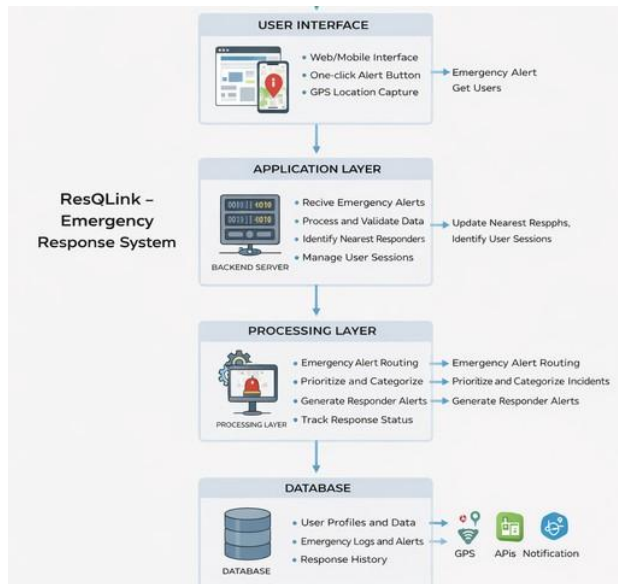


Fig. 1. Overall system architecture of the proposed ResQLink- an emergency response system, illustrating the flow of data from user-initiated emergency alerts through the frontend interface, backend processing, and response coordination modules to real-time alert delivery and status tracking.

A. Data Collection

The system collects essential information from users during emergency situations. This includes:

- User identity (optional or pre-registered)
- Real-time GPS location
- Type of emergency (medical, accident, fire, etc.)
- Additional notes or description

This data is captured through a simple and user-friendly interface to ensure quick interaction.

B. Data Preprocessing

Once the alert is triggered, the system processes the incoming data to:

- Validate the request
- Extract location coordinates
- Categorize the type of emergency
- Assign priority levels if needed

The processed data is then forwarded to the backend server for further handling.

C. Location Tracking

The system uses GPS technology to fetch accurate user location in real time. This ensures:

- Precise identification of the incident location

- Reduced dependency on manual input
- Faster routing to nearby emergency services

D. Alert Transmission

After processing, the emergency alert is transmitted to:

- Nearest emergency responders
- Relevant authorities (hospital, police, fire services)
- Registered contacts (optional feature)

The system ensures minimal delay by using efficient communication protocols.

E. Response Coordination

Once the alert is received:

- Responders can view incident details and location
- Navigation assistance is provided using map integration
- Status updates can be sent back to the user

This two-way communication improves coordination and transparency.

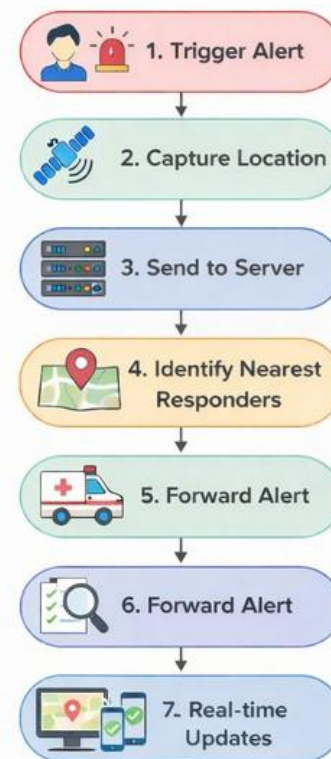


Fig. 2. Workflow of the ResQLink emergency response system, illustrating the sequence from emergency alert generation and location capture to backend processing, alert routing, and real-time response tracking.

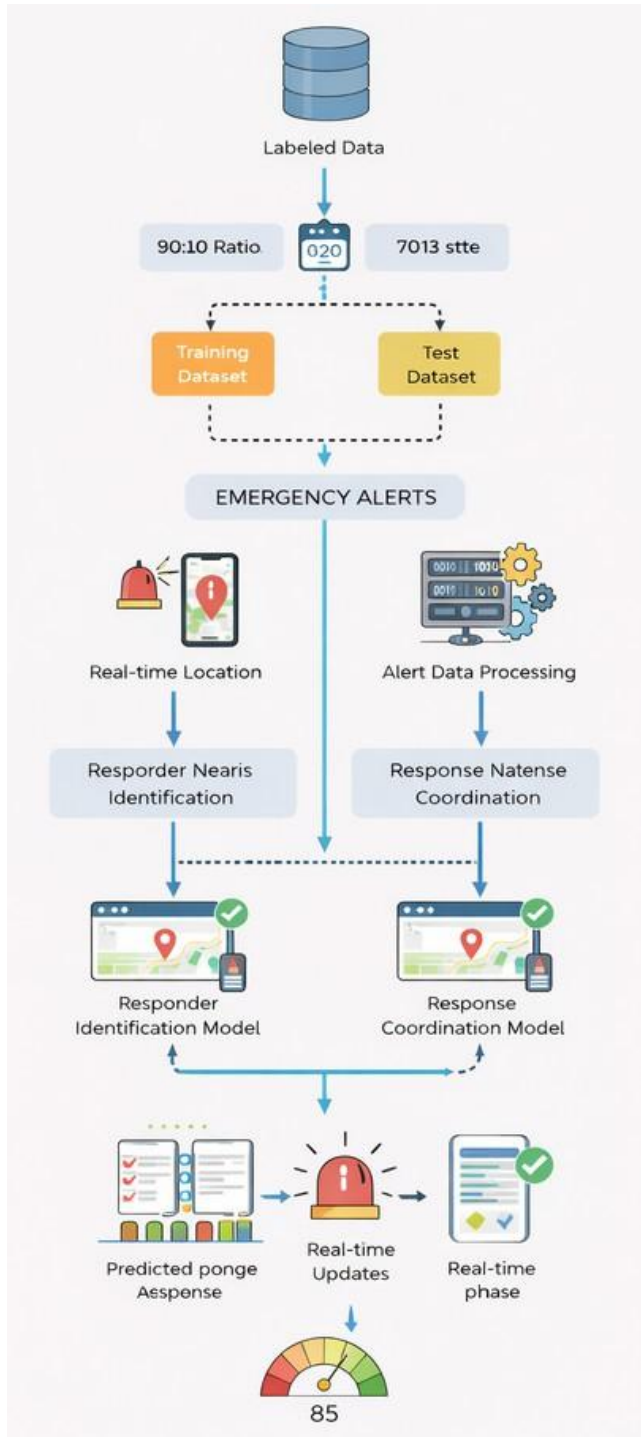


Fig. 3. Operational workflow of the ResQLink system, illustrating the processing of emergency alerts from data collection and location tracking to alert validation, responder identification, and real-time response coordination

F. Real-Time Monitoring and Updates

After the alert is dispatched, the system continuously tracks the status of the response. It provides:

- Real-time updates to the user
- Status notifications (alert received, responder assigned, help on the way)
- Monitoring of response progress

This enhances transparency and keeps users informed.

G. Data Storage and Logging

All emergency events are stored in a database for future reference.

The stored data includes:

- Alert details and timestamps
- Location data
- Response history

This helps in analyzing system performance and improving future responses.

H. System Workflow Summary

The overall methodology can be summarized as follows:

- User triggers emergency alert
- System captures real-time location
- Data is validated and processed
- Nearest responders are identified
- Alert is transmitted to responders
- Response is tracked and updated

The methodology of the ResQLink system is designed to provide a fast and efficient mechanism for handling emergency situations through real-time communication and location tracking. The system begins with the user initiating an emergency alert using a simple interface, which minimizes interaction time during critical conditions. Once the alert is triggered, the system automatically captures the user's current location using GPS, ensuring accurate and reliable incident reporting without requiring manual input.

After collecting the necessary data, the system performs validation and preprocessing to ensure that the information is complete and meaningful. The alert is then forwarded to the backend server, where it is analyzed and categorized based on the type of emergency. This step allows the system to prioritize requests and ensure that the appropriate emergency services are notified without delay.

The backend processing module plays a key role in identifying the nearest available responders by analyzing location data and service availability. Using integrated mapping and routing techniques, the system determines the most efficient way to deliver the alert to responders. This significantly reduces response time and improves coordination between users and emergency services.

Once the alert is transmitted, the system continuously monitors the response process and provides real-time updates to the user. Notifications such as alert confirmation, responder assignment, and estimated arrival time are communicated to ensure transparency and reliability. Additionally, all emergency events are recorded in a database for future analysis, enabling

Overall, the proposed methodology ensures a seamless flow of information from alert generation to response execution, making ResQLink a reliable and practical solution for modern emergency management.

IV. IMPLEMENTATION

ResQLink is implemented as a full-stack application with clearly defined components, ensuring efficient communication between users and emergency services. The system follows a modular architecture where each component is responsible for a specific functionality, enabling scalability, reliability, and ease of maintenance.

A. Frontend

The frontend of the ResQLink system is developed using modern web technologies to provide a responsive and user-friendly interface. It is designed with a focus on simplicity so that users can quickly trigger alerts during emergency situations without confusion.

Key features include:

- One-click emergency alert button for instant activation
- Real-time GPS location display on the interface
- Selection of emergency type (medical, fire, accident, etc.)
- Live status updates and notification alerts
- Clean and minimal UI design to reduce user effort

The frontend communicates with the backend through secure API calls and ensures smooth interaction across different devices such as smartphones, tablets, and desktops.

B. Backend

The backend serves as the core processing unit of the system. It is responsible for handling all incoming requests and coordinating communication between different modules.

Main functionalities include:

- Receiving and validating emergency alerts from users
- Processing data and extracting relevant information such as location and emergency type
- Identifying and routing alerts to the nearest emergency responders
- Managing user authentication, sessions, and access control
- Handling communication with external services such as maps and notification APIs

The backend is designed to ensure low latency and high reliability, which are critical for emergency response systems.

C. Database

The system uses a cloud-based or local database to store and manage data efficiently. The database acts as a central repository for all system-related information.

Stored data includes:

- User profiles and login credentials
- Emergency alert records with timestamps
- Location coordinates and incident details
- Response history and status logs

The database supports quick retrieval of information, enabling real-time updates and analysis of past incidents to improve system performance.

D. Integration

ResQLink integrates multiple technologies to provide seamless functionality and real-time performance.

Key integrations include:

- GPS services for accurate location tracking
- Mapping APIs for visualization and route optimization
- Notification systems (push notifications/SMS) for alert delivery
- Real-time communication protocols (HTTP/WebSockets)

These integrations ensure that the system operates efficiently even under high demand.

E. Security and Reliability

Security is an essential aspect of the ResQLink system, as it handles sensitive user data. The system incorporates:

- Secure authentication and authorization mechanisms
- Data encryption during transmission
- Protection against unauthorized access
- Reliable error handling and fail-safe mechanisms

These measures ensure that user data remains safe and the system functions consistently.

F. Performance and Scalability

The system is designed to handle multiple simultaneous requests without performance degradation. Scalability is achieved through:

- Modular architecture
- Efficient database management
- Optimized API communication

This allows the system to be deployed in real-world environments with a large number of users.

G. User Experience and Accessibility

Special attention is given to user experience to ensure that the system can be used by individuals in stressful situations.

- Simple navigation and intuitive design
- Quick response time
- Minimal input requirements

Accessibility across devices and platforms

V. RESULTS AND DISCUSSION

The ResQLink system was tested under different simulated emergency scenarios to evaluate its performance, reliability, and usability. The evaluation focused on key aspects such as alert generation time, accuracy of location tracking, response coordination, and overall system efficiency.

The system was able to consistently deliver fast and reliable performance across multiple test cases, demonstrating its suitability for real-world emergency situations.

Key Observations:

- Significant reduction in alert generation time due to one-click activation
- Accurate real-time location tracking using GPS services
- Faster response coordination compared to traditional manual systems
- Improved communication between users and emergency responders
- Reliable delivery of alerts even under varying network conditions

In addition to these observations, the system showed strong consistency in handling multiple requests simultaneously without noticeable delay. The backend processing was efficient in identifying the nearest responders and routing alerts appropriately, which contributed to reduced response time. The integration of real-time updates allowed users to stay informed about the status of their request, increasing transparency and trust in the system.

Furthermore, the system demonstrated scalability, as it was able to manage multiple emergency alerts without performance degradation. The modular architecture ensured that each component functioned independently while maintaining seamless communication with other modules. This design makes the system adaptable for deployment in both small-scale and large-scale environments.

The user interface was also evaluated for usability and accessibility. Test results indicated that users could easily understand and operate the system with minimal instructions. The simple and intuitive design played a crucial role in enabling quick interaction during stressful conditions, which is critical in emergency scenarios. Overall, the ResQLink system proved effective in minimizing delays, improving coordination, and enhancing communication efficiency. The results highlight its potential as a reliable and practical solution for modern emergency response systems.

VI. CONCLUSION AND FUTURE WORK

ResQLink presents a practical and efficient solution for modern emergency response challenges. By combining real-time communication, location tracking, and automated alert mechanisms, the system enhances the speed and reliability of emergency services.

The project demonstrates how technology can be leveraged to improve public safety and reduce response delays. Its scalable architecture makes it suitable for deployment in both urban and rural environments.

In addition, the system's modular design allows easy integration of new features without affecting existing functionalities. The use of real-time data processing ensures that emergency alerts are handled with minimal latency, which is critical in life-threatening situations. The platform also promotes better coordination between users and responders, leading to more organized and effective emergency management. Furthermore, the system can be extended to support government and private emergency services, increasing its practical applicability. With continuous improvements and wider adoption, ResQLink has the potential to become a reliable digital infrastructure for emergency response systems.

Future Enhancements:

- Integration with IoT devices (wearables, sensors)
- AI-based emergency prediction and prioritization
- Multi-language support for wider accessibility
- Mobile application deployment for faster access

REFERENCES

- [1] Z. Shelby and C. Bormann, 6LoWPAN: The Wireless Embedded Internet. Wiley, 2009.
- [2] A. K. Sangaiah, A. Gandomi, S. Basu, and M. R. Buyya, "Internet of Things (IoT): Foundations, applications, and challenges," *Future Generation Computer Systems*, vol. 97, pp. 1–3, 2019.
- [3] P. Verma, J. S. Sodhi, and S. K. Sood, "Cloud-based emergency response system using mobile devices," *Journal of Network and Computer Applications*, vol. 60, pp. 1–12, 2016.
- [4] Google Developers, "Geolocation API," [Online]. Available: <https://developers.google.com/maps/documentation/geolocation>
- [5] M. Satyanarayanan, "Mobile computing: the next decade," *ACM SIGMOBILE Mobile Computing and Communications Review*, vol. 15, no. 2, pp. 2–10, 2011.
- [6] T. Erl, R. Puttini, and Z. Mahmood, *Cloud Computing: Concepts, Technology & Architecture*. Pearson, 2013.
- [7] Firebase Documentation, "Cloud Messaging," [Online]. Available: <https://firebase.google.com/docs/cloud-messaging>
- [8] Node.js Foundation, "Node.js Documentation," [Online]. Available: <https://nodejs.org>
- [9] React Documentation, "React – A JavaScript Library for Building User Interfaces," [Online]. Available: <https://react.dev>
- [10] S. K. Sood, "A combined approach to ensure data security in cloud computing," *Journal of Network and Computer Applications*, vol. 35, no. 6, pp. 1831–1838, 2012.
- [11] World Health Organization (WHO), "Emergency response frameworks," [Online]. Available: <https://www.who.int>
- [12] National Emergency Number Association (NENA), "Next Generation 911," [Online]. Available: <https://www.nena.org>